

Intara XR

Article number: 50880046

LIGHT TECHNOLOGY

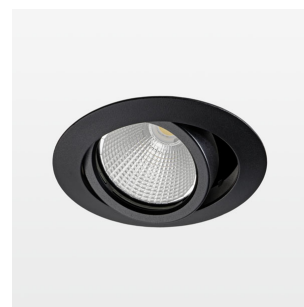
| | |
|----------------------|----------|
| LED | COB |
| Light colour | 840 |
| Luminous flux | 3930 lm |
| System power | 34 W |
| Luminaire Efficiency | 116 lm/W |
| Reflector | Medium |
| Beam angle | 24° |

LUMINAIRE

| | |
|---------------------------|-------------|
| Swivel angle | +25° / -25° |
| Weight | 0.69 kg |
| Protection rating . class | IP 20 . II |
| Luminaire colour | stratoblack |

OPTIONAL

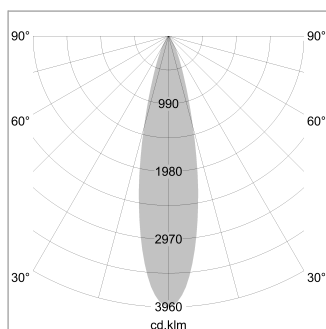
RAL-colours, NCS-colours (powder coating or wet spraying) on inquiry, surface alloys on inquiry, honeycomb louver



Recessed luminaire with LED, rated life of the LED L80/B10 > 50000 h, colour rendering index CRI > 80, chromaticity tolerance 2 SDCM (initial), reflector with circular light distribution pattern, reflector pure aluminium 99,99% in MIRO-Silver®, segmented and faceted, 3D lens silicon to reduce the proportion of scattered light, die-cast aluminium, powder-coated, rotation angle , swivel angle +25° / -25°, stratoblack,

Inclusiv fix connected driver unit
220-240 V~ / 50-60 Hz, max. 18 luminaires per circuit (B16A fuse)

Note: All data are typical values. System features may change with product improvements due to technical advances. Errors excepted.



| | | |
|-------|------|-------------|
| 1.0 m | 0.45 | 13622.0 |
| 2.0 m | 0.90 | 3405.5 |
| 3.0 m | 1.35 | 1513.6 |
| 4.0 m | 1.80 | 851.4 |
| 5.0 m | 2.25 | 544.9 |
| Ø (m) | | E0(0°) [lx] |

